

Release Notes

Axiom Capital Planning
Version 2022.1

The Axiom logo consists of the word "AXIOM" in a bold, white, sans-serif font. It is enclosed within a rectangular frame that has a purple-to-blue gradient. The frame is composed of two horizontal lines and two vertical lines, with the top and bottom lines being slightly longer than the side lines.

AXIOM

10 S. Wacker Dr
Suite 3375
Chicago, IL 60606
(847) 441-0022
www.syntellis.com
info@syntellis.com

Syntellis® is a trademark of Syntellis Performance Solutions, LLC. Microsoft®, Excel®, and Windows® are trademarks of Microsoft Corporation in the United States and/or other countries. All other trademarks are the property of their respective owners.

This document is Syntellis Performance Solutions Confidential Information. This document may not be distributed, copied, photocopied, reproduced, translated, or reduced to any electronic medium or machine-readable format without the express written consent of Syntellis Performance Solutions.

Copyright © 2022 Syntellis Performance Solutions, LLC. All rights reserved.

Version: 2022.1

Updated: 7/6/2022

Contents

About the Release Notes	4
New features in 2022.1	5
What to know before upgrading	6
Preparing and scheduling upgrades	7
Getting help and training	8
Issues fixed in 2022.1	10

About the Release Notes

Syntellis is pleased to announce the 2022.1 release of Axiom Capital Planning. Each product release provides new features, enhancements, and configuration options to meet your needs. Many of these features and enhancements are a direct result of your feedback and suggestions.

The purpose of these release notes is to provide you with the following:

- High-level descriptions of new features
- Information to know before upgrading
- Steps for preparing for and scheduling your upgrade
- List of fixed issues

TIP: Periodically, the release notes are updated when new information is available, including patch release fixes. To view the latest release notes, we encourage you to view them in the Axiom Capital Planning online help. On the help home page, simply click the Release Notes link at the top of the page.

► Accessing current and older release notes for Axiom Healthcare products

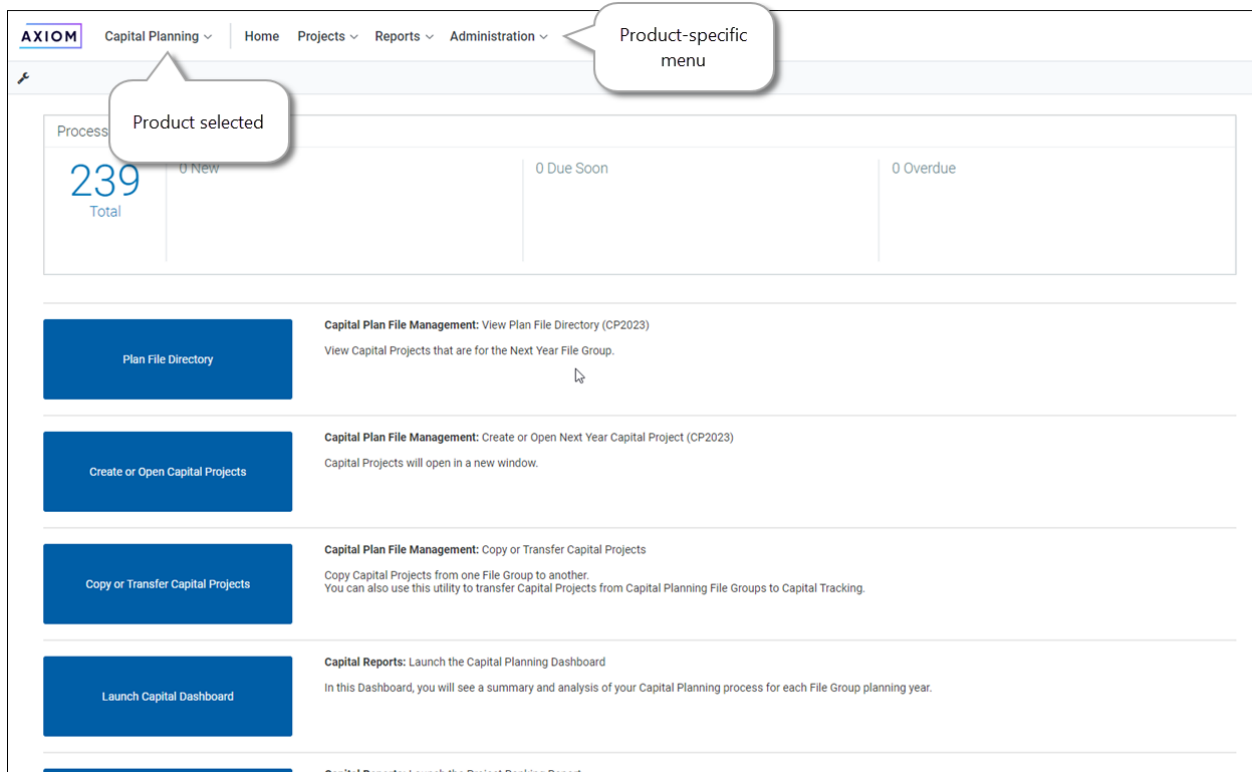
The online help for Axiom Healthcare products includes a page with links to current and past release notes for the last several years. To access this page, [open the product online help](#), and at the top of the menu on the left side of the page, click **Release notes > All Axiom products**.

New features in 2022.1

Axiom Capital Planning 2022.1 delivers the following enhancements:

New web navigation

The navigation page has been updated in the web to include drop-down menus for selecting products and sections within each product.



What to know before upgrading

IMPORTANT: You must apply the Axiom 2022.1 upgrade before applying any 2022.1 Axiom product upgrades. Axiom upgrades are backwards compatible so you can upgrade different products at different times, but you must upgrade to the Axiom 2022.1 before the first product upgrade. Refer to the **Axiom 2022.1 Release Notes** and **Axiom Healthcare Suite 2022.1 Release Notes** for considerations before upgrading.

When upgrading to the 2022.1 version of Axiom Capital Planning, keep in mind the following:

- This product upgrade may contain updated templates, calculation methods, and remediated defects.
- Syntellis delivered reports may be removed or replaced. Any report that you saved under a different name or created new will remain untouched. Replaced reports are available in Document History, if needed.
- Any Syntellis delivered report that you moved to a new location will automatically move back to its original location.
- Syntellis product templates and calculation method libraries will be replaced.
- Product task panes will be replaced.
- Process definitions will not be replaced.
- Driver files will be replaced.
- Security roles and sub-systems will be reset to their configured settings. All user security exceptions you may have made will remain intact.
- Specific items configured as part of your company or organization's implementation such as imports, exports, driver files, and process management files, will remain as is. Any required modifications to these areas are covered in the release notes, if required.

Preparing and scheduling upgrades

Summary of the upgrade process:

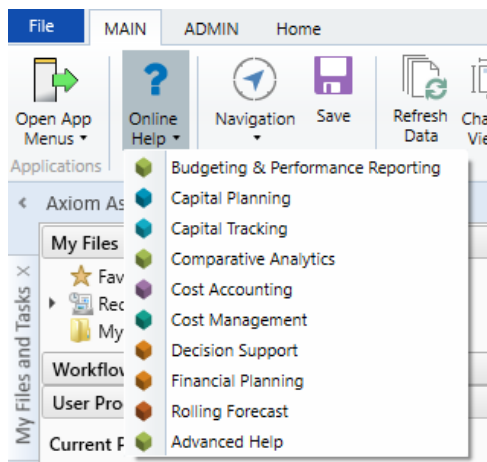
1. **Review product release notes** – Review this document to familiarize yourself with the new features and functionality.
2. **Schedule an installation date** – Submit a request to your organization's Axiom Master System User (MSU) to contact support by creating a [support ticket](#) to schedule an installation date and time with at least three days of advance notice. The request should include the following information:
 - Desired Axiom platform version.
 - Desired Axiom for Healthcare product and version.
 - Indicate whether to first refresh the Axiom test sandbox with a copy of the production instance of Axiom and apply update(s) to it. If so, provide the soonest that Syntellis can do this.
 - Propose an approximate two-hour downtime window when Syntellis can apply update(s) to the production instance of Axiom during regular business hours, Monday through Friday 7 AM to 7 PM Central (except holidays recognized by Syntellis).
3. **Complete manual configuration updates** – After installing the upgrade, review any manual setup steps needed to enable features for this version.

Getting help and training

Syntellis provides world-class resources at your fingertips directly within the Axiom system. Axiom Help provides topics, knowledge base articles, documents, webinar/training announcements, and videos to guide you through managing your system. To access these resources, do any of the following:

- **Windows and Excel Clients** – From the Main or Admin ribbon tab, click **Online Help**, and then select the product. Axiom Help opens in a new browser window.

NOTE: The online help will only open for products you are licensed to use.



- **Contextual help** – Form/web-enabled features and products include contextual help directly within the user interface. This information provides a quick summary and/or instructions specifically related to the screen you are using. You can access this information by clicking the question mark in the upper right corner of the screen. To access the full Axiom Help system, click **Open Help** at the top of the contextual help dialog.



Syntellis Central

Syntellis Central provides centralized self-service content and resources for the Axiom Capital Planning platform and suite of products. Using Syntellis Central, you can:

- Search help across all Axiom products
- Access tips, tricks, and best practices in our knowledge base
- Find training and certification content including on-demand, video, webinars, labs, and instructor-led courses

- Submit a support issue, find suggested content, and manage any outstanding issues directly with us
- Review open Software Service project status and details

Issues fixed in 2022.1

The following table lists the resolutions for issues addressed in 2022.1, released on March 28, 2022:

Excel and Web systems

No issues addressed in this release.

Web system only

Issue	Description
CP/CT Web depreciation doubled when copying from prior FG [128354]	Summary: Due to changes made in how depreciation saves, in some cases, copying data from a prior file group duplicates depreciation in the database. Resolution: Corrected by updating the formula to ensure the old methodology is not included when projects are copied.
Various Capital web reports link to launch attachments error [134896]	Summary: When the user clicks on the attachments link in various reports, they receive an error message. Resolution: Corrected by updating the formula used in reports.
CP/CT Web Interest issues [127036]	Summary: Interest expense is entered on the balance sheet but users can create other expenses called "interest expense," which causes confusion. Interest entered on the balance sheet is not flowing to the income statement properly. Resolution: Corrected by updating the formulas to include interest on the income statement.